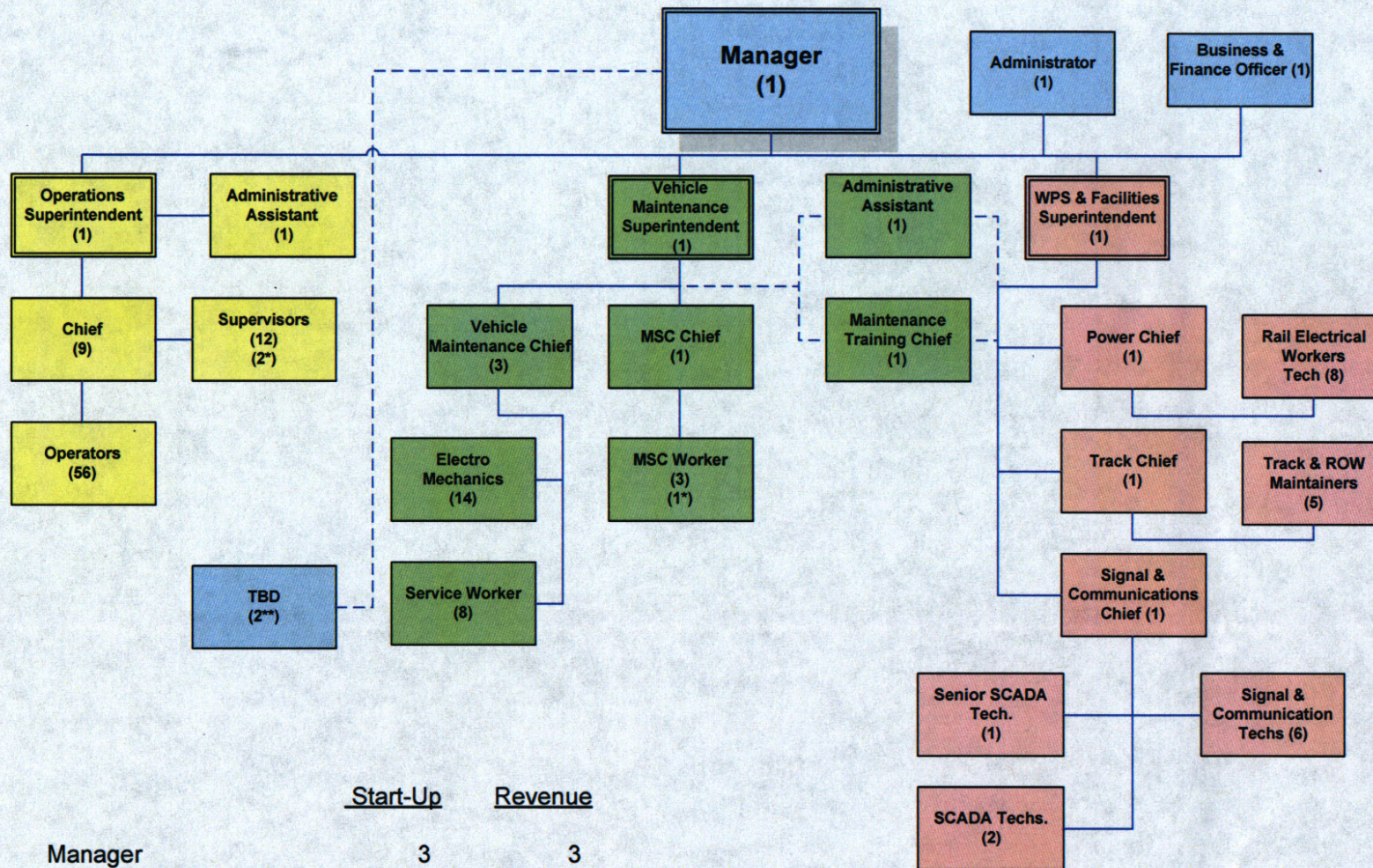


# King County Metro Link Light Rail Organization

March, 2007



	<u>Start-Up</u>	<u>Revenue</u>
Manager	3	3
Operations	79	81
Vehicle Maintenance	32	33
Way, Power, Signals & Facilities	26	26
TBD	0	2
<b>Total</b>	<b><u>140</u></b>	<b><u>145</u></b>

\* These positions will be funded in the operations budget. Hiring will be deferred until sometime after revenue operating day when a need can be demonstrated.

\*\* These two FTE positions will be funded in the operations budget. KCM Light Rail Manager to determine hire dates and positions.